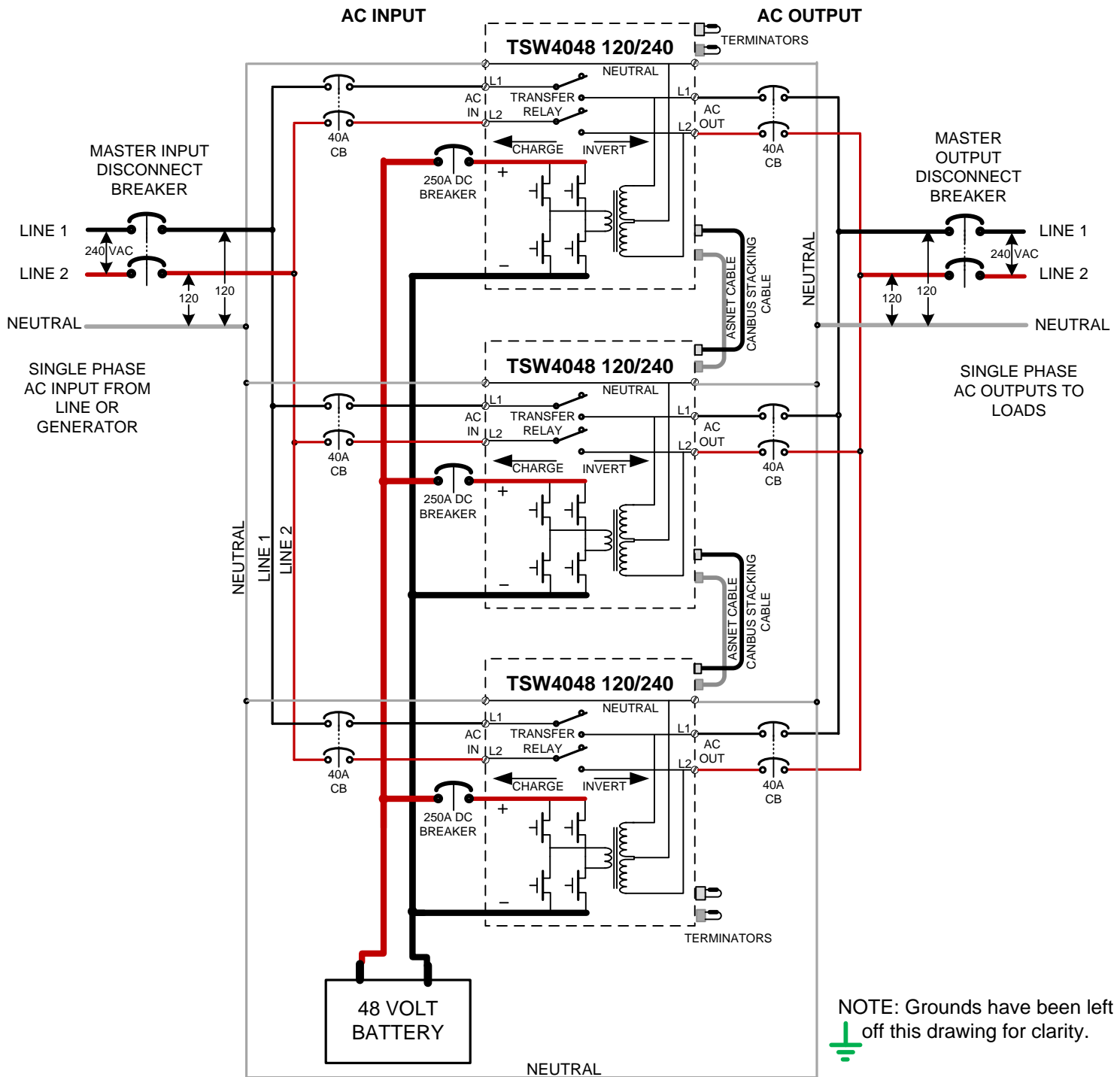


APOLLO - TSW4048 120/240 SPLIT PHASE – USA PARALLEL SCHEMATIC

USE WITH FIRMWARE VERSION 9.58 OR LATER




NOTE: Grounds have been left off this drawing for clarity.

NOTES:

The physical wiring should be done such that each TSW Inverter / Charger is wired directly back to the battery and to the AC input and AC output breakers to equalize the voltage drop.

The 40 Amp AC circuit breakers at the input and output of each TSW are to protect the Transfer Relay inside the TSW which is rated at 40 Amps AC.

 APOLLO SOLAR	23 F. J. Clarke Circle Bethel, CT 06801 (203) 790-6400 www.ApolloSolar.com
	USA 120/240VAC SPLIT PHASE WIRING TSW 3 PARALLEL SCHEMATIC
13-APR-2013	J. PFEIFER
	REV 6