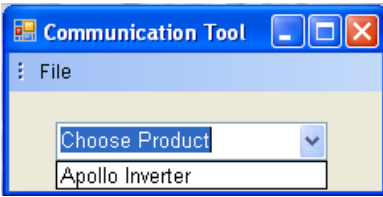
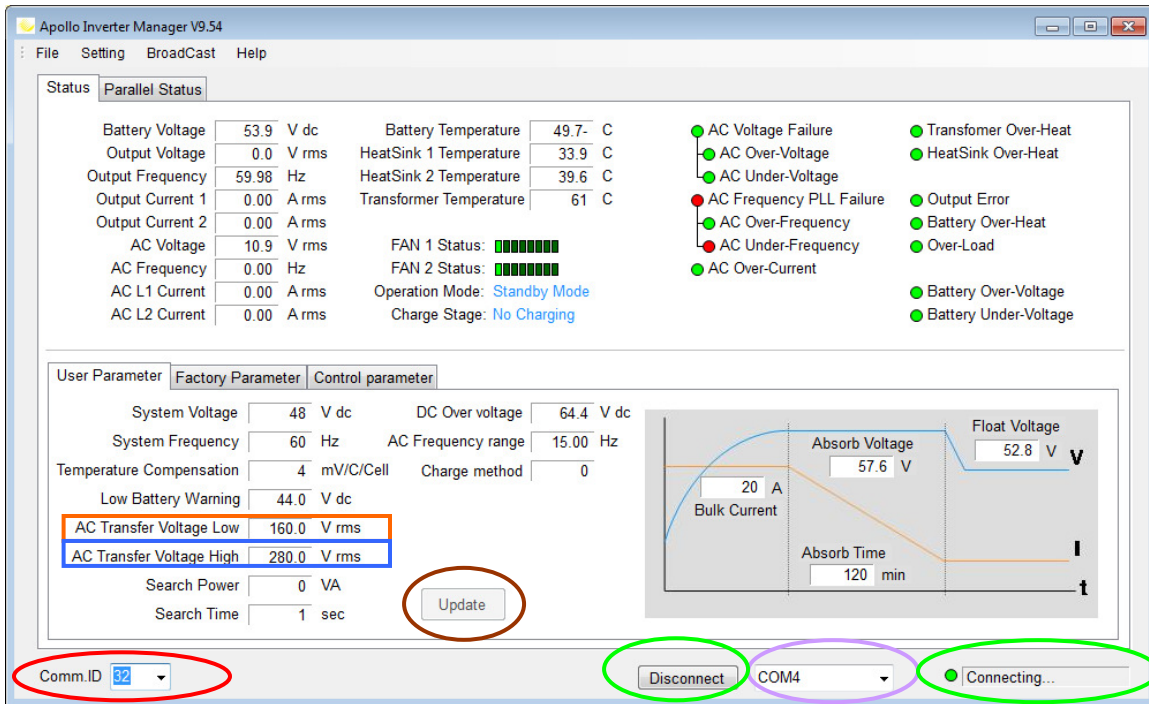


Instructions to change the AC Input Voltage settings on the Apollo Solar TSW Inverter.

1. Run the AIM Software. The following screen will appear:



2. Select “Apollo Inverter” from the pull down menu. The following screen will appear:



3. Connect the AIM device & Cable between the Inverter & the USB Port of you Computer.
4. Power Up the Inverter & put it in standby by pressing the Standby button.
5. Select the correct COM Port for your AIM device.
6. Select the correct Comm. ID for your inverter (the default is 32).
7. Press the Connect button and verify that the box to the right displays “Connecting...”.
8. Set the AC Transfer Voltage Low to 220.
9. Set the AC Transfer Voltage High to 260.
10. Press the Update Button.
11. Select the Factory Parameter TAB and then change back to the User Parameters & verify the changes have been saved (The values are read from the Inverter every time the screen is changed).
12. Close the AIM Program & you are finished.
13. Reboot the Inverter for the output to reflect the changes.

